

Attend the

40th Annual Conference & Exhibition

KRWA's 40th Anniversary Year

for Public Water and
Wastewater Utilities

March 27 - 29, 2007

**Century II Convention Center
Wichita, Kansas**

This year's conference theme:

"You are KRWA!"



with the participation of:

Kansas Department of Health & Environment
Kansas Water Office
Division of Water Resources
Environmental Protection Agency
Kansas Department of Commerce
Kansas Geological Survey
USDA Rural Development

WELCOME ...

The 2007 Annual Conference & Exhibition is KRWA's 40th Anniversary conference and is planned for March 27 - 29 at Century II Convention Center, Wichita. Thanks to the support of participating agencies and a full house of exhibitors, the KRWA conference provides premium value in content and a budget saving opportunity to shop and compare technologies and prices at the premier water and wastewater exhibition in the Midwest.

WHO SHOULD ATTEND?

City council members, mayors, operators, clerks, bookkeepers, RWD board members, managers, administrators, industry and government officials, sanitarians and plumbers should attend. People from 300 cities and 195 rural water systems attended in 2006.

DATES & LOCATION

**Tuesday, Wednesday, Thursday
March 27, 28 and 29
Century II Convention Center, Wichita, Kan.**

REGISTRATION

Advance registration is requested for preconference sessions on Tuesday. Register for the preconference sessions on the reverse side of the registration form. Save \$20 with advance registration postmarked or called in by March 15. Preregistrants receive complimentary tickets to the opening night "Grand 40 Hoopla" barbecue and games, as well as a breakfast on Thursday. Indicate your intention to attend either function on the registration form.

Meal tickets must be specified with preregistration. Registration name badges are required to attend sessions, exhibits or meal functions, including the Tuesday evening "Hoopla" barbecue and games.

Registration forms are printed on the last pages of this booklet. Copy if necessary. Return registration forms with payment to: KRWA, PO Box 226, Seneca, Kan. 66538. You may also register online at www.krwa.net. If you have a question, call KRWA at 785/336-3760 or e-mail KRWA at krwa@krwa.net.

Special note: Casual dress is encouraged.

OPERATOR CERTIFICATION

Operator credits are posted for each session. Verification forms will be in each registrant's packet. Check the box at the top of the registration form if you want operator credit.

2

WHAT THIS CONFERENCE OFFERS

8 preconference sessions on Tuesday, March 27; preregistration is required. See pages 8 to 15.

48 concurrent sessions, Wednesday and Thursday. See page 18 and beyond for these sessions.

275 exhibits in EXPO Hall - see the latest in products and services. See pages 26 - 27 for floor plan.

Attorneys' Forum - for lawyers only, seeking to learn more and exchanging information. Invite your city or water system attorney. This year they can earn hard to get "Legal Ethics" credits. See page 6.

"Grand 40 Hoopla," the annual opening night social; many new games and events with prizes at each game! It's complimentary to all who preregister. See page 16.

Special Guests: Senator Sam Brownback and Tracy Streeter, Director, Kansas Water Office. See page 5.

Opening Session & Keynote: Scott Friedman, CSP. His renowned program is fast-paced, humorous, and full of useable, practical ideas on becoming a victor of change instead of a victim. See page 17.

Best Tasting Water Contest, Show 'n Tell Poster Board Displays, CCR Contest, Wateringhole and the Cybercafe. See page 7.

Awards Banquet and Entertainment: Recognition of the Best of the Best, followed by the Rocking 60s Musical Soap Opera "Suds," in the Teall Theatre. Laundromat characters and music - 60s style!

Spouse Programs, Wednesday, departs Century II at 11 a.m. to the Yoder Carriage House Restaurant for lunch. Following, spouses will tour the incomparable and just opened Kansas Underground Salt Museum, just north of Yoder. See more, page 28.

Certification Exam: The certification exam will be given for Class I - IV Water and Wastewater, Thursday afternoon. See page 42 for information on obtaining an exam application form.

Annual Membership Meeting: Thursday, March 29 at 8:00 a.m. in Room 209A.

Spring Golf Tourney: Tuesday, March 27 at the Rolling Hills Golf Club, 223 S. Westlink (off of Maple and Tyler in west Wichita). This is a four-person scramble. (Name your team members). Register to play golf on the KRWA registration form. The \$65 fee includes green fees and cart rental and box lunch. Remit payment to KRWA. No jeans and no spikes! These are course rules.

Accommodations: See page 46 for hotel blocks.

3

Tuesday, March 27

- 8:00 a.m. Registration Opens, Connecting Lobby, Century II
- 8:30 a.m. Spring Golf Tourney; Rolling Hills Golf Club (pay \$65, registration form)
- 9:00 a.m. Attorneys' Forum (for attorneys only; see p. 6)
- 10:00 a.m. Preconference Sessions: 8 sessions begin (pages 8-15)
- Noon Lunch: (buffet lunch at Century II for \$10; purchase meals by marking on registration form)
- 1:30 p.m. Preconference sessions reconvene
- 4:00 p.m. EXPO Hall opens: 275 booths; (p. 34-43). Also Poster Board Display and Wateringhole Cybercafe' (p. 7)
- 6:30 p.m. "Grand 40 Hoopla" – social, new games complimentary to all who preregister by March 15 (p. 16)

Wednesday, March 28

- 7:30 a.m. Registration Opens, Connecting Lobby, Century II
- 8:30 a.m. Opening Session, Concert Hall (p. 17)
Keynote: Scott Friedman, CSP.
- 10:00 a.m. EXPO Hall Opens
- 10:45 a.m. Concurrent Sessions (p. 18-19)
- 11:00 a.m. Special Spouses program departs east lobby by bus for Yoder
- Noon Luncheon: Century II
Speaker: U.S. Senator Sam Brownback, (p. 5)
- 1:30 p.m. Concurrent Sessions (p. 20-21)
- 2:45 p.m. Concurrent Sessions (p. 22-23)
- 4:00 p.m. Concurrent Sessions (p. 24-25)
- 5:00 p.m. Social - EXPO Hall
- 6:30 p.m. Awards Banquet, Awards Presentations, Entertainment: "SUDS" (p. 29)

Thursday, March 29

- 7 a.m. to "Full hot buffet breakfast", Century II
 - 8:30 a.m. (please indicate on registration form)
 - 8:00 a.m. Registration Opens, Connecting Lobby; EXPO Hall opens
 - 8:00 a.m. Annual Meeting, KRWA Membership: Room 209A
 - 9:30 a.m. Concurrent Sessions (p. 30-31)
 - 10:00 a.m. Spouse Program: "Smart Scents" with Jill Miller, Room 201, Century II (p. 28)
 - 10:45 a.m. Concurrent Sessions (p. 32-33)
 - Noon Luncheon: Century II: Tracy Streeter, Director, Kansas Water Office (p. 5)
 - 1:30 p.m. Certification Exam, Water & Wastewater Classes I - IV, Room 209A (see p. 42 for details)
- Map of Wichita, Century II (p. 44)
 Floor Plan, Century II Convention Center (p. 45)
 Hotels/Accommodations (p. 46)
 Registration Forms (p. 47, 49, 51)



Senator Sam Brownback

Sam Brownback was elected to the House of Representatives in 1994 and in 1996, he was elected to the U.S. Senate seat held by Bob Dole. In the U.S. Senate he serves on the Appropriations and Judiciary Committees. He chairs the DC Appropriations Subcommittee as well as the subcommittee responsible for the Constitution.

Senator Brownback is currently focused on defending and promoting traditional marriage, building market-and consumer-based solutions to health care reform, and meaningful tax reform including an optional flat tax. He has worked hard to ensure that we confirm judges who will interpret the law and not legislate from the bench, to create a BRAC-like commission to review and terminate failed or completed federal programs, to protect and renew our American culture, and to defend human life.

Sam and his wife Mary have five children.

Senator Brownback has been invited to attend and address the Wednesday noon luncheon.



Tracy Streeter, Director Kansas Water Office

Tracy Streeter is Director of the Kansas Water Office, the state's water planning and coordination agency. He was appointed Director by Governor Sebelius in 2004. Previously, he served as Executive Director of the State Conservation Commission. Tracy has 21 years of experience dealing with Kansas' water resources.

A native Kansan, he grew up as part of a family farming operation in Brown County. He holds a Bachelor of Science degree in Agriculture from Missouri Western State University and a Master of Public Administration degree from the University of Kansas.

Streeter and his wife, Denise, have two children, Mitchell and Morgan. He currently is President of the Valley Falls Board of Education and enjoys flying, hunting, fishing and golfing.

Tracy Streeter plans to update the Thursday noon luncheon on water issues facing Kansans today.

Tuesday, March 27, Meeting Room 201, 9:00 a.m.

Attorneys' Forum 2007

The seventh Annual KRWA Attorneys' Forum will be held on Tues., March 27. Gary Hanson of Stumbo, Hanson & Hendricks, Topeka, has arranged a unique, informative program open to all KRWA-member water systems' attorneys.



Continuing Legal Education (CLE) credits of seven hours, including one hour of ethics credit, will be available to attorneys attending the entire session.

The session will be free and limited to the first 40 registrants who must also represent KRWA member cities or RWDs.

9:00 - 9:50 Steven M. Harris, Doyle Harris Davis & Haughey, Tulsa, Oklahoma – [Litigating the 1926\(b\) Case.](#)

9:50 - 10:45 Kim Christiansen, General Counsel, Kansas Water Office – [An Overview of Programs Administered by the Kansas Water Office: The Water Marketing Program, Water Assurance Districts, and More.](#)

11:00 - noon Stanton A. Hazlett, Disciplinary Administrator, Topeka, Kansas – [Ethics for Water System Lawyers.](#)

Noon - 1:00 Complimentary lunch in conference room

1:00 - 2:45 Roundtable discussion of various topics for Public Water Supply lawyers (Part I): [Easement Issues: Right-of-Way use following Annexation; Kansas One-Call; Right-of-Way Management in Cities; Collection of Security Deposits by Cities/compliance with HB 2592. Franchise Agreements - RWDs Providing Water Service for Cities; NPDES](#)

3:00 - 3:30 Gary L. Smith, Business and Community Programs Director, Local Programs, USDA/Rural Development, Topeka, Kansas – [USDA/Rural Development Programs: What Lawyers Need to Know.](#)

3:30 - 4:30 Roundtable discussion of various topics for Public Water Supply lawyers (Part II): [Cities' and Water Districts' Obligations to Provide Water Service to Residents; Investment of Idle Funds; Antenna Contracts for Water Towers; What Constitutes a "Usual and Necessary Outbuilding?"; Benefit Unit Fees - Reasonableness?](#)

4:30 Adjourn. (Attendees are invited to tour exhibits in EXPO Hall and attend the social and BBQ at 6:30 p.m.)

Great American Water Taste Test!

KRWA is sponsoring the seventh annual Best Tasting Water in Kansas Contest. If you think your water is the best, then put it to the test! In 2002, the city of Emporia won and was among the five finalists in the nation; in 2003, Public Wholesale District No. 4 took the national honor! Last year, Emporia won the Kansas contest.

How to enter? It's easy. Just bring a one-gallon sample of water from your city or RWD in a glass container to the registration desk by 2 p.m. on Tuesday, March 27. A panel of water industry professionals will judge the samples later that afternoon.

In addition to fame and fortune of having the "Best Tasting Water in Kansas," the winner will be eligible to compete against other states at National Rural Water's "Rural Water Rally" in Washington, D.C. in April.



Poster Displays

People learn by seeing how other communities are doing things. That's what makes the "Show 'n Tell" Poster Board display such a hit at KRWA's conferences. Here's a way for your city or RWD to show off handy forms, work orders, policies, newsletters, CCRs, or photos. The **Poster Board Display** is limited to the first 25 systems that call to reserve display board space.

CCR Contest

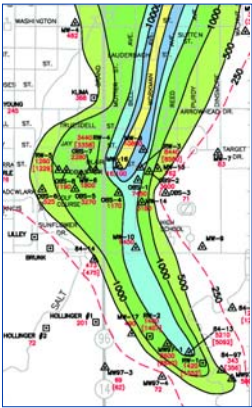
KRWA was the first in the nation to sponsor a Consumer Confidence Report contest. Who is doing the best job with these required reports? If you'd like to enter your most current CCR, send three copies to KRWA by March 1. Certificates go to the winners in four categories:

- RWDs and privately owned systems under 3000
- Municipal systems under 3000
- Municipal systems 3000 to 25000
- Municipal systems serving more 25000 or more.



Cybercafe' – and wireless in EXPO Hall

In addition to having six computers online in EXPO Hall, KRWA plans to have wireless Internet throughout the exhibition arena.

10:00 a.m. - 4 p.m., Hyatt Ballroom D

Ground Water: Finding, Maintaining, Protecting and Rehabilitating It

This session will cover basic subjects in relation to obtaining a new ground water supply. The days of just hiring a guy with a drill rig and drilling a well are long over. Proper procedures need to be followed to have a productive and quality ground water source.

The treatment and rehabilitating of water wells can help your system obtain years of additional service from your wells. All water wells begin to lose some of the capability to yield water as soon as they are completed. This is due to natural chemical and biological processes that occur within and above the aquifer, often resulting in plugging the well screen and surrounding formation. Attend this session to learn what is required to find, develop, maintain and protect a new or existing ground water supply.

This session also includes an overview of Kansas water rights to include an explanation of the permitting and perfection processes. The changes that are allowed of a water right's point of diversion, place of use and use made of water (type of use) and the restrictions on these changes will be discussed. And because some areas are closed to new permits, water rights purchases are becoming more common. Attend this session to learn important tips to purchase a good water right at a fair price.

Presenters:

Robert Vincent

Ground Water Associates, Wichita, Kan.

Douglas Helmke, LG

Kansas Rural Water Association

Moderator: Mike Schultz, City of Brewster

Water operators who attend will receive 5 hours of credit towards operator certification.

10:00 a.m. - 4 p.m., Hyatt Ballroom E

Wastewater Collection System Evaluation And Rehabilitation

Customers do not usually call the office to compliment the performance of wastewater treatment facility workers. The only time anyone thinks about the wastewater system is when something goes wrong. Can service interruptions be prevented or reduced to a minimum?

First, is the system performing according to design? What is the condition of the system? Is the system costing more and more each year just to maintain sanitary conditions? Answering these questions is the first step in finding possible solutions or options to problems. This session will cover collection system maintenance and root control. Also covered will be smoke testing techniques, dye testing, video-taping and visual observations.

Concerning rehabilitation of collection systems, the session will cover repair versus replacement, including re-lining of existing mains and pipelines and manhole rehab including lining and structural repair.

Presenters:

Melinda Lambert

Paul Banzet, P.E.

Jack Row, III

Todd Smith

Utility Maintenance Contractors, LLC
Wichita, Kan.

Moderator: Bret Beye, City of Herington

Wastewater operators who attend will receive 5 hours of credit towards operator certification.



10:00 a.m. - 4 p.m., Room 209A

Development of GIS for Improved Digital Management Services



This multi-part session will address key factors involving:

1. Deciding if development of a GIS would be beneficial for your system or utility and how to utilize GPS technology to develop the GIS.
2. If your system pursues GIS development, will it need to hire a Director or can existing staff perform the duties required?
3. How much could it cost to develop a GIS Department and keep it operating?
4. What types of equipment (hardware/software) will a new GIS Department require?
5. What types of data are available and what other sources exist to assist a new GIS Department in benefiting the community?
6. Who can the new GIS Department network with to acquire the training, information, and assistance it needs?
7. What types of functions will the GIS Department need to become familiar with to perform the tasks at hand? (e.g., 'connecting dots')
8. What are some more advanced functions of GIS software that a new Department can utilize to become more efficient at managing a system?
9. What does a fully functioning GIS have the capabilities to do? What types of information can be accessed by having a GIS in place?

Presenters:

Eileen Battles

DASC, Kansas Geological Survey, Lawrence, Kan.

Chris Schmeissner

Jefferson County GIS Coordinator, Oskaloosa, Kan.

Luke Zakrzewski and Michael Jolley

GIS Workshop, Lincoln, Neb.

Moderator: Pete Koenig, Kansas Rural Water Association

Water and wastewater operators attending will receive 5 hours credit towards certification.

10

10:00 a.m. - 4 p.m., Room 209B

Building Blocks for Creating or improving a Web Site



An online presence has become increasingly important for all

businesses and organizations, including cities and rural water systems. But simply having some pages on the Web "to look at" doesn't mean you're meeting user needs. An effective Web site serves customers and saves management time. Starting with a clear purpose for the Web site is the most important first step towards building a useful Web presence. As with most projects, taking time in the beginning to focus on desired results is time well spent. How do you decide what to offer on the site? Is the job to be outsourced or do you do it yourself? Can you afford it? Can you afford NOT to? Whether the goal is to create a Web site from scratch, improve an existing site, or fine-tune and glean new ideas, this seminar will offer concrete advice and good solid practice. This is a hands-on, open structure seminar. Attendees are welcome to bring a laptop, development software, Web files, and most importantly, lots of questions. All attendees will be given a CD containing:

- free Web design software
- a free Web page template that complies with W3C standards for XHTML 1.0
- free resource list of links to get more help

Topics to be covered include:

- Deciding on purpose and focus
- Selecting and securing an effective domain name
- Choosing Web hosting that's right for you
- What software to use for development
- How to organize and select content
- Graphic and layout "do's and don'ts"
- Creating a site that grows with you
- Getting help when you're stuck
- Using your Web site effectively
- Publicizing the finished product
- Maintaining your site easily and inexpensively

Presenter:

Jen Sharp

JenSharp.com, Ottawa, Kan.

Moderator: Rita Moore, City of Edgerton

No credit provided for session attendance.

11

10:00 a.m. - 4 p.m., Room 210A

HR Fundamentals; Powerful presentations



HR Fundamentals

Working with new city council or rural water board members isn't always easy. There are some fundamental HR issues everyone needs to be aware of and deal with to help. Knowing which federal and state laws apply to your size organization is a start. Job descriptions can help clarify roles. Having defined policies can help minimize micro-management and unnecessary changes. You also need to know what it means to work in a "right to work" state such as Kansas, plus what discrimination and harassment is and isn't. Join us in discussing these issues and more. You will learn:

- Laws that pertain to your organization.
- How to develop a job description.
- Why policies and procedures are helpful.
- What discrimination and harassment is and isn't.

Leave confident you know the basics of HR!

Powerful Presentations

Every presentation you make represents you and your community or water system. Want to add zip and pizzazz to your presentation? Want to have your participants leave feeling pumped about applying what they learned? Want to get creative? Want to learn some PowerPoint tips and tricks to help your presentation pop? Then this session is for you! You will learn:

- Ways to set the stage.
- Dynamic openers.
- Exciting ways to present key points.
- Techniques for adding humor.
- Ways to get participants involved.

Learn how to present with pizzazz!

Presenters:

Jeremey R. Hall, JD

Cynthia B. Stotlar, M Ed. SPHR

Creative Business Solutions
Topeka, Kan.

Moderator: Barb Polson, City of Nortonville

No credit provided for session attendance.

12

10:00 a.m. - 4 p.m., Room 210B

Workplace Safety; National Incident Management System Training



Construction of all types comes with an inherent risk of injuries or even fatalities. However, when workers are aware of the hazards and safety procedures, risks are reduced. This session will help identify and provide procedures to control hazards that cause the most serious injuries found in these groups: electrical, falls, struck-by incidents, trenching or excavation, and respiratory protection.

Also, federal, state, local, tribal, private sector and nongovernmental personnel with a direct role in emergency management and response must be NIMS and ICS trained. Included are emergency services related disciplines such as EMS, hospitals, public health, fire service, law enforcement, public works/utilities, skilled support personnel, and other emergency management response, support and volunteer personnel.

All elected and/or appointed officials directly involved in emergency operations should successfully complete IS-700 NIMS: An Introduction, ICS-100 and ICS-200. Otherwise, at the minimum, local chief elected and appointed officials should complete IS-700. This training session qualifies for the above training. An exam will be given at the close of the session.

While most emergency situations are handled locally, when there's a major incident help may be needed from the state or federal government. NIMS allows responders from different jurisdictions and disciplines to work together to better respond to natural disasters and emergencies, including acts of terrorism. NIMS' benefits include a unified approach to incident management standard command and management structures and emphasis on preparedness, mutual aid and resource management.

Presenter:

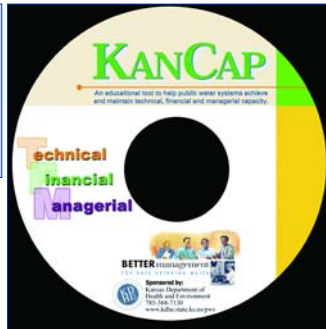
Kevin Jones

Midwest Fire Training Associates
Burlington, Kan.

Moderator: Carl Chalfant, City of McLouth

Water and wastewater operators attending will receive 5 hours credit towards certification.

13

10:00 a.m. - 4 p.m., Room 210C**KanCap:
Improving
Management of
Kansas Water
Systems**

Utility management and finance issues are complicated. This session will provide the opportunity for board and council and staff members to learn about water utility finance and management issues – and go home with a copy of the nationally acclaimed resource “KanCap” program. It is the nation’s “one of a kind” training program aimed at helping sustain and improve management for better drinking water. Those who attend and pass the two section quizzes will be registered as completing the training management and financial sections. The third module is the “technical” session which attendees will be able to attend at other times later in the year at local sessions.

KanCap was developed with input and dialogue from organizations and stakeholders including the League of Kansas Municipalities, Kansas Section AWWA, Midwest Assistance, various organizations, associations, state and federal agencies, city council member focus groups and RWD board members. The result is an interactive CD and hard copy companion guide in a 3-ring binder that will help your city or RWD gain greater confidence in knowing what to do and where to turn. Videos, quizzes and more than 216 additional references are contained within the project. Attendees will receive the KanCap handbook and interactive CD. Preregistration is required.

Presenters:**John Haas**

Ranson Financial Consultants, LLC
Wichita, Kan.

Cathy Tucker-Vogel

KS Dept. of Health & Environment
Topeka, Kan.

Moderator: Bert Zerr, Kansas Rural Water Association

No credit provided for session attendance.

10:00 a.m. - 4 p.m., Room 203**Alternative Dispute
Resolution**

Dealing with problems in local communities and between communities is often a challenge. It's always critical to address issues in the most civil and cost effective manner possible. This workshop will provide system personnel the opportunity to learn and practice new skills on how to reach agreement on thorny issues, both internally and externally. The principles of facilitation and mediation and their value in negotiating agreements will be one of the highlights of the seminar. Tips will also be presented on how to conduct meetings that help people reach mutually acceptable decisions. This session is designed for public water system managers, RWD board and city council members, and anyone else working to find solutions to water problems. This seminar will help you with:

- Improving the dynamics of board/council member relations
- Contract negotiations for water that satisfy both the supplier and the customer
- Right-of-way and easement work
- Developing regional public water supply strategies

Presenters:**Gary L. Flory**

Kansas Institute for Peace and Conflict Resolution
North Newton, Kan.

Kirsten Zerger

Kansas Institute for Peace and Conflict Resolution
North Newton, Kan.

Ken Grotewiel

Kansas Water Office
Topeka, Kan.

Moderator: Ken Grotewiel, Kansas Water Office

No credit provided for session attendance.

It's the "Grand 40 Hoopla" BBQ, Games, Prizes and Meet & Greet Night

When: Tuesday, March 27, 6:30 p.m.

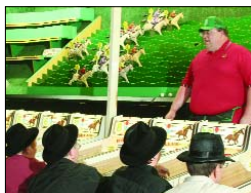
Where: Century II Convention Center, Wichita

The "Grand 40 Hoopla" is an unabashed celebration unlike anything you'll find anywhere. Combined with the greatest barbecue, potato salad, baked beans, cole slaw and dessert and social, there'll be an extravaganza of carnival games and events to keep you up past bedtime. With a combination of large games provided by Ottaway Amusement and Celebrations, the Grand 40 Hoopla will have something for everyone.



This high-energy night

includes an expanded casino. A new hunting skills game, *Laser Sport*, trades lasers for lead shot in scoring hits on clay pigeons. This game will be a hit many times over! Tried, true and fun games are still on the venue for '07. *Frog Bog*, *Kentucky Derby*, *High Striker*, *Bug Buster*, *Machine Gun Alley*, *Balloon Dart*, *Basketball Toss*, and *Armchair Quarterback* will all test those latent carnival skills never lost from childhood. Merle and Linda Windler's *Water Bingo* will keep players watching their cards to win nice prizes. All games will be stocked with prizes so there's no waiting for gratification!



That classic ride, the *Spider*, with new paint and lights, sets the carnival mood. The *Mechanical Bull* is as ruthless as ever for shedding wanna-be riders. Digital pictures of riders will be available. The 2007 conference marks a milestone

40th year for KRWA and for the 2,200-plus who attend. The Grand 40 Hoopla will be an event to remember. Don't miss it. **It's free to all who pre-register – but you'll need a ticket to enter so mark your registration form if you plan to attend.** Register by March 15 to receive the reduced price, plus your complimentary ticket to the Grand 40 Hoopla, with BBQ and Games, as well as the breakfast Thursday morning. With thousands of dollars' in prizes; there'll be fun and frolic for everyone. Don't miss it!

7:30 a.m. Registration Opens, center lobby of Century II: complimentary coffee, juice, bagels and muffins. Exhibits open at 10 a.m., tour all day.

OPENING SESSION

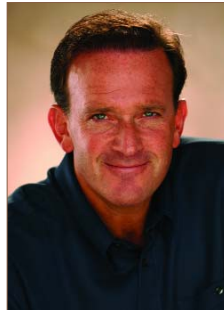
8:30 a.m., Concert Hall, Century II

Opening Video, National Anthem

Invocation: Larry Remmenga, Director, KRWA

Welcome: Carlos Mayans, Wichita Mayor

KEYNOTE SPEAKER



Scott Friedman, CSP

'How-to guy' for techniques on sales motivation, humor, and creating results.

The Best Way to Predict the Future is to Create It

In these turbulent, uncertain, globally competitive times, innovation and resourcefulness are essential to survival. This renowned program is fast-paced, humorous, and full of useable, practical ideas on becoming a victor of change instead of a victim. Learn to create an environment that fosters creativity and team spirit. Learn to be driven by your purpose and values, and not circumstances and emotions. "The Best Way" will be a great kick-off for the 2007 Conference. You'll walk away feeling better about yourself, your responsibilities and your role in the future. Don't miss this grand "shot in the arm" loaded with the needed tools for creating the future you want!

About Scott

Scott has earned the Certified Speaking Professional designation, the highest awarded by the National Speakers Association, and he served as its 2004-2005 National President.

Scott Friedman is a humorous speaker and author with a valuable message. Scott teaches audiences to open their minds through laughter, while sharing "how to" techniques and practical ideas. He illustrates an approach to becoming a victor of change instead of a victim.

His clients include the Federal Reserve, Qwest, Pepsi, numerous corporations and associations and even ... the IRS.

Open your minds to new possibilities . . . as Scott will prove that the best way to predict the future is to create it.

Hyatt Ballroom D

Moderator: Larry Remmenga
City of Concordia, KRWA
Op. Credit: W

Stage 2 Rule Requirements and Compliance Schedules

The Stage 2 Disinfectants and Disinfection Byproducts (DBP) Rule became law in January 2006. This rule applies to all public water supply systems. It builds upon earlier rules and tightens compliance monitoring requirements for two groups: THMs and HAAs. EPA will be overseeing this rule until KDHE adopts it. This session provides information on reporting requirements and compliance schedules. If you are one who is responsible for regulatory compliance, this session is a must.

Monica Wurtz
Environmental Protection Agency
Kansas City, Kan.

Hyatt Ballroom E

Moderator: John Sweet
City of Lyons
Op. Credit: W & WW

Funding for Community Needs Through CDBG

The Community Development Block Grant (CDBG) program provides federal funding to Kansas communities to address their development and infrastructure needs. The CDBG program has a 22-year history of helping communities enhance their overall quality of life by providing new water and sewer systems, roads, bridges, fire stations and community centers, as well as the rehabilitation of housing units. Attend this session to learn how this program might help your rural water district or city.

Debbie M. Beck
Kansas Department of Commerce
Topeka, Kan.

210 A

Moderator: Pat Shaffer
Butler RWD 5, KRWA
Op. Credit: W

Water Storage Tanks and Chlorine Residual

Maintaining adequate chlorine residual in water storage tanks is a challenge for many systems. This session will discuss factors that lead to a reduction in residual as well as alternative approaches to minimizing the problem. The discussion will include storage tank placement and piping options, rechlorination, and recirculation/mixing systems.

**Greg Dekat
Bryan Ford
Alan Soelter**
Bartlett & West Engineers, Inc.
Topeka, Kan.

210 B

Moderator: Jay Mars
Pottawatomie RWD 3
Op. Credit: W & WW

Funding Opportunities Through USDA Rural Development

While the USDA Rural Development Program provides loans and grants for water and wastewater facilities, attendees will also be interested to learn about the potential funding for renewable energy/energy efficient projects. Is there interest in installing a wind turbine to help reduce electric costs? Or maybe investment in more efficient grain drying and handling equipment for farmers? Attend this session to see how these programs might benefit your community, local businesses or yourself.

Gary Smith
USDA Rural Development
Topeka, Kan.

209 A

Moderator: Melody Jo Bowen
City of Burden
Op. Credit: W

ISO – A Partnership With Local Communities

This presentation will cover the basic elements considered in the ISO Fire Suppression Rating Schedule to develop a Public Protection Classification (PPC) for use by the insurance industry. The presentation will focus on the elements of water supply evaluated during a PPC survey and the critical role of hydrant placement and water system capacity in proper application of the appropriate PPC by the insurance industry.

Christopher T. Lummus
Insurance Services Office
Leesburg, Texas

209 B

Moderator: Brad Mears
City of Holton/Public Wholesale 18
Op. Credit: None

Fair Labor Standards Act – Exempt vs. Non-Exempt Employees

Water and wastewater systems vary greatly when setting pay scales for their employees. Assuming that all employees are to be paid on a salary basis with no over-time or compensation being paid can lead a utility down the path of financial destruction – and lawsuits. This session offers information to gain a better understanding of “exempt” vs. “non-exempt” employment status and laws a utility must comply with.

Susan Lang
US Dept. of Labor/Wage Hour Div.
Wichita, Kan.

210 C

Moderator: Mike Gilliland
City of Osage City
Op. Credit: W & WW

Chlorine Safety: Which Form Is The Safest, Anyway?

Attend this session to learn how chlorine is made, the true statistical data on recorded accidents, and the comparisons of all three forms of chlorine: Gas Chlorine; Sodium Hypochlorite (bleach); and Calcium Hypochlorite (granular tablets, pellets, and briquettes). A review of safety procedures for all forms of chlorine will be presented.

Ron Grage
Chlorinators Incorporated
Stuart, Fla.

203

Moderator: Joe Obholz
City of Hays
Op. Credit: W

Water Softening Technology

This session explores current technology related to those “pesky” calcium and magnesium ions we call hardness. But today’s advanced softening technology is also addressing other water quality concerns like arsenic, lead, nitrates, radionuclides and others. Join us and review the latest water softening technology.

Chris Liveris
USABlueBook
Gurnee, Ill.

Hyatt Ballroom D

Moderator: Sharon Dwyer
Douglas RWD 5, KRWA
Op. Credit: None

Just a Spoonful of Humor

After painting the town red, does it take you three weeks before you can apply the second coat? Do you ever notice that the older you get, the better you used to be? Have senior moments become a way of life? Becoming chronologically gifted does have its challenges, and now it's time to turn the challenges into chuckles. You can never turn back the clock but you can wind it up once again.

Scott Friedman
FunnyScott.com
Denver, Colo.

Hyatt Ballroom E

Moderator: Bruce Smith
Douglas RWD 3
Op. Credit: W

Groundwater Rule: Public Water Supply Systems

In October 2006, the Environmental Protection Agency finalized the Groundwater Rule. This long anticipated Rule will apply to nearly all public water supply systems that use groundwater as source water. The Rule includes requirements for sanitary surveys, possible triggers, source monitoring, disinfection requirements of 4-log virus removal, additional record keeping, and more. Make sure you attend this session on the upcoming regulatory program.

David Waldo
KS Dept. of Health & Environment
Topeka, Kan.

209 A

Moderator: Jim Cobler
Shawnee Cons. RWD 4
Op. Credit: None

Compensation for a 1926(b) Case and/or Annexation?

While federal loans or financing guarantees protect system territory, what record do they have in being compensated for lost income and customers when winning a 1926(b) action? Although systems spend big money on attorney fees bringing a 1926(b) case, does 1926(b) guarantee legal fees? Alternatively, can systems negotiate compensation when territory is leased or lost to annexation? Attend to learn the law and what system experience has been.

Elizabeth Dietzmann
Attorney at Law
Rolla, Mo.

209 B

Moderator: Dean Hermesch
City of Olpe
Op. Credit: W & WW

GIS/GPS Mapping: Costs & Benefits

Who needs maps? Nearly everyone. A recent survey on KRWA's Web site found that nearly 50% of those completing the poll operated with utility maps that had not been updated since original construction. This session includes a discussion of Global Position System receivers, printed maps and map books of several municipal and rural water systems. Costs, timeframes, updates and benefits will be explained.

Pete Koenig
Kansas Rural Water Association
Seneca, Kan.

210 A

Moderator: Sam Atherton
Public Wholesale District 4, KRWA
Op. Credit: W & WW

SCADA – Improving Today's Utility Systems

Many water and wastewater systems in Kansas have incorporated SCADA technology in their operations. Supervisory Control and Data Acquisition (SCADA) is an essential part to efficiently operate utilities. Attend this session to learn how to select a SCADA system. What guidelines and "must-know" information should first-time buyers have? Utilities want to make sure that the system purchased today will serve in the future. Security recommendations will also be provided.

Doug Mager
Micro-Comm
Olathe, Kan.

210 B

Moderator: Rob Lawson
City of Norton
Op. Credit: W & WW

Applications and Benefits of Variable Frequency Drives

Attend this session to learn benefits and general applications of Variable Frequency Drives (VFDs) for water and wastewater utilities. This session will discuss how VFDs function and the latest technology. Additional items covered will be motor issues, harmonics and potential energy savings. Your questions are encouraged.

Mike Grant
Yaskawa Electric America
Wildwood, Mo.

210 C

Moderator: Charlie Schwindamann
Kansas Rural Water Association
Op. Credit: WW

Wastewater Lagoon Design and Compliance

Municipal wastewater lagoons are the most common type of wastewater treatment in Kansas. This session will cover the design criteria for lagoons including these topics: organic and hydraulic loading, determining operating capacity, multi-cell configurations, overloading, effluent monitoring including BOD, TSS, ammonia and fecal coliform, permit requirements and compliance. This session will help you to better determine the ability of your lagoon to treat wastewater now and in the future.

Rod Geisler
KS Dept. of Health & Environment
Topeka, Kan.

203

Moderator: Allen Dinkel
City of Hoisington
Op. Credit: None

Micromanagement: Counterproductive Control

There is a difference between the need/desire to learn more about a problem/issue and the need/desire to control a problem/issue. Policy makers often actually make the problem worse by assuming that, just because they are 'in charge', they know more than the person doing the job. This session identifies micro-management and will instruct in ways to help lessen its negative effects on the operation of the well-run organization.

Don Osenbaugh
League of Kansas Municipalities
Derby, Kan.

Hyatt Ballroom D

Moderator: Brian Isch
City of Gridley
Op. Credit: W & WW

What Damage Does Cavitation Cause?

Cavitation may be the single largest problem when pumping liquids. What is cavitation? What causes cavitation? What damage does cavitation inflict? This session will cover those questions and will train you how to detect and correct cavitation. It is not a problem with the pump – it’s a system problem that shows up in the pump.

Mike Fears

Gorman-Rupp Pumps
Kansas City, Mo.

Hyatt Ballroom E

Moderator: Paul Froelich
City of Enterprise
Op. Credit: W

KDHE Regulatory Update for Water Supplies: Part 1

This session will review rules and regulations impacting public water supply systems. This first session will review the Total Coliform Rule, Phase II/V Rule, Arsenic Rule, Public Notifications Rule, Consumer Confidence Rule, and recordkeeping requirements for all water supply systems.

Kelly Kelsey

KS Dept. of Health & Environment
Topeka, Kan.

209 A

Moderator: Gary Hanson
Stumbo, Hanson & Hendricks, LLP
Op. Credit: None

The RWD Annexation Process: How It Works? (Or does it?)

The current version of the Kansas RWD Annexation law has been around for 20 years. This session consists of a panel discussion of how the law is being used. Attendance is a must for rural water districts facing annexations. Cities benefit too.

Richard Hines

Hines & Alquist, P.A.
Erie, Kan.

Ray Connell

Connell & Connell
El Dorado, Kan.

Mark Crumbaker

Johnson Cons. RWD 6
Olathe, Kan.

209 B

Moderator: Pamela Erhart
City of Winchester
Op. Credit: None

Preventing Identity Theft

With the proliferation of online transactions and trends toward a cashless society, the rate of identity theft is on the rise. Thieves are no longer after your wallet and other belongings – they now want you! Being a victim will wreak havoc on your credit – and can take years to overcome. What precautions do you take to protect privacy? How do you avoid becoming a victim and what do you do if you become a victim? How do anti-virus protection and phishing programs play into the hands of criminals?

Nick Bennett

CossBan Software
Salina, Kan.

210 A

Moderator: Jim Boyer
City of Gardner
Op. Credit: W & WW

Understanding Vibration Analysis

This session will explain the benefits of proper alignment of pump and motor components and the savings that result. Learn about basic information to understand a vibration reading in a report. The goal is to help prevent failure of rotating components caused by misalignment, poor balance or bad bearings. See how checking and monitoring actual operation can help minimize maintenance costs.

Mike Douglas

Douglas Pump Service
Olathe, Kan.

210 B

Moderator: Mark Meinke
Leavenworth RWD 7
Op. Credit: W & WW

State Revolving Funds: Water and Wastewater Funding Options

KDHE administered revolving loan funds for both water and wastewater utilities. Since 1997, the Public Water Supply Loan Program has funded more than \$350 million. Small cities and RWDs have received more than \$135 million or 70% of the loans. Since 1989, the Wastewater SRF has more than 270 loans totaling in excess of \$700 million. This session describes the programs and application process.

William Carr, Rod Geisler

KS Dept. of Health & Environment
Topeka, Kan.

210 C

Moderator: Darrell Schlabach
Washington RWD 1, KRWA
Op. Credit: W & WW

Fuse It, Lay It: HDPE Pipe

HDPE pipe is unlike any other type most water systems have. Incorporating HDPE pipe in your system is not a major challenge. Learn how to connect the HDPE pipe to any other type of pipe when you use the correct type of fittings. This session will provide you with the know-how; see how this construction material can be a benefit to your water system.

Al Wilkes

Performance Pipe
The Woodlands, Texas

203

Moderator: Laura Fisher
City of Bentley
Op. Credit: W & WW

KAN STEP: Building Kansas Communities and Water Systems

There are certain steps that should be followed if a RWD or community is going to participate in the KAN STEP program. There are also potential pitfalls to be avoided. Attend this session to hear three experts explain projects involving a water system, a fire station and a community center. You will obtain valuable insight from those who have successfully completed KAN STEP projects.

Jason Schlickbernd

Wilson & Company, Salina, Kan.

Dan Hall

BG Consultants, Manhattan, Kan.

Tim Schook

Washington, Kan.

Hyatt Ballroom D

Moderator: Eric Bailey
City of Fort Scott
Op. Credit: W & WW

Portable and Stationary Power Generation

This presentation provides a comparison of the three major types of equipment presently available to many water and wastewater systems to maintain distribution or collection systems during power outages. Generator sizing, towing requirements, fuel selection and sourcing will be discussed. Attend this session so that your utility is prepared for the inevitable short or long-term power outage.

Ed Dunn

Precision Systems
Calumet, Ill.

Hyatt Ballroom E

Moderator: Randy Norris
Cowley RWD 5
Op. Credit: W

KDHE Regulatory Update for Water Supplies: Part 2

This session will continue to review rules and regulations impacting your water supply system. This second session will review the Radionuclide Rule, Stage 1 Disinfectants and Disinfection Byproducts Rule, the Enhanced Surface Water Treatment Rule, and the Long Term 1 Enhanced Surface Water Treatment Rule.

Kelly Kelsey

KS Dept. of Health & Environment
Topeka, Kan.

209 A

Moderator: Gary Hanson
Stumbo, Hanson & Hendricks, LLP
Op. Credit: None

The Anatomy of a Territorial Agreement

Yes, we can all just get along (sometimes)! This session consists of a panel discussion on the factors that shape RWD/City territorial agreements, their legal basis, and how to construct a good agreement for your system.

Dennis Schwartz

Shawnee RWD 8
Tecumseh, Kan.

Elizabeth Dietzmann

Attorney at Law
Rolla, Mo.

Neil Dobler

Bartlett & West Engineers, Inc.
Topeka, Kan.

209 B

Moderator: Duane Thiel
McPherson RWD 6
Op. Credit: None

Become a Water-Wise Decision-Maker

The Kansas Environmental Leadership Program (KELP) enables communities and water districts to become wise decision-makers regarding water issues. Team approaches are central to effective resolutions and implementation of change. Explore how your city or water district can become more effective at identifying and improving local water-related concerns.

Judy Willingham

Kansas State University
Manhattan, Kan.

210 A

Moderator: Denise Eggers
Jefferson RWD 12
Op. Credit: None

What Your Audit Can Do for You!

The audit report is the end result of your engagement. Getting there is the important part of the process. Interactive discussion, handouts and time for questions will assist attendees with the accountability and responsibilities of board and council/commission members as well as staff members. This session will also discuss the debt service ratio used to meet bond covenants and assist with budgeting and water rates.

Pat Parker

Pottberg, Gassman & Hoffman, Chtd.
Manhattan, Kan.

210 B

Moderator: Gary Smith
Public Wholsale District 11
Op. Credit: W

What Is Going On In Our Distribution Systems?

Water systems in Kansas have worked diligently to maintain the proper chlorine residuals in their distribution systems. This session will review chlorination, chloramines, ammonia levels and nitrification in a distribution system and methods to test for them. Also information will be provided how to gather baseline data to determine if changes in water quality are occurring.

Kevin Menning

Hach Company
Claremore, Okla.

210 C

Moderator: Jim Jackson
Kansas Rural Water Association
Op. Credit: W

Nonpoint Source Pollution: The Bigger Picture

Protecting your drinking water source has many advantages from aesthetics to economics. The task of protecting your water supply doesn't have to be difficult. This session will discuss nonpoint source pollution and how it can make an impact on water quality. The protection can begin in your own back yard!

Sheryl Ervin

KS Dept. of Health & Environment
Topeka, Kan.

203

Moderator: Doug Helmke
Kansas Rural Water Association
Op. Credit: None

South Central Kansas Water Coalition

The South Central Kansas Water Coalition is a unique organization of local governments cited as a model for regional collaboration on water issues. Attend this session to learn about the opportunities and challenges in forming such partnerships and cooperation, and why such efforts may be critical to a region's future.

Bob Myers

Newton City Attorney
Newton, Kan.

EXHIBIT HALL FLOOR PLAN

To Sessions, Meal functions	25	26	27	28	29	30	31	32	33	34	"Show 'n tell" coffee, tea & rolls			
1	35	36	37	38	"Show 'n tell" Posters									
2	39	40	41	42	43	44	45							
3														
4	46	47	48	49	50	51	52							
5	53	54	55	56	57	58	59	60						
← Restrooms														
6	61	62	63	64	65	66	67	68						
7	69	70	71	72	73	74	75	76						
8														
9	77	78	79	80	81	82	83	84	85					
10	86	87	88	89	90	91	92	93	94					
11														
12	95	96	97	98	99	100	101	102	103	104	105			
Soft Drinks	106	107	108	109	110	111	112	113	114	115	116			
13	126	127	128	129	130	131	132	133	134	135	136	137	138	
14	139	140	141	142	143	144	145	146	147	148	149	150	151	
← Restrooms														
15	152	153	154	155	156	157	158	159	160	161	162	163	164	165
16	166	167	168	169	170	171	172	173	174	175	176	177	178	179
17														
18	180	181	182	183	184	185	186	187	188	189	190	191	192	193
19	194	195	196	197	198	199	200	201	202	203	204	205	206	207
20														
← To Hyatt	208	209	210	211	212	213	214	215	216	217	218	219	220	221
21	222	223	224	225	226	227	228	229	230	231	232	233	234	235
22														
23	236	237	238	239	240	241	242	243	244	245	246	247	248	249
24	250	251	252	253	254	255	256	257	258	259	260	261	262	263
Soft Drinks Popcorn	264	265	266	267	268	269	270	271	272	273	274	275		

Exhibits are big part of KRWA conferences!

In 2006, nearly 2,200 people from 300 cities and more than 195 rural water systems attended this conference & exhibition. It's a great place to shop, compare – and learn.



Schedule for Exhibits to be open:
Tuesday, 4:00 p.m. - 6:30 p.m.
Wednesday, 10 a.m. - 6:30 p.m.
Thursday, 8 a.m. - 12 noon.

Note: Opening Session begins at 8:30 a.m., Wednesday, March 28 in Concert Hall. Exhibits open at 10 a.m.

The final Exhibitor Directory and floor plan will be included in the registration packet.

Check out the many great prizes in the **Water Pac Raffle** at KRWA's booth.

Door prizes donated by exhibitors will be announced or drawn for at the Thursday noon luncheon.

"Thank You" to all exhibitors and sponsors who help make this conference the largest and best in the Midwest.

WaterPac Raffle

"WATERINGHOLE"
 CYBER CAFÉ
 High Speed
 Internet
 Connections

Business,
 Food,
 & Fellowship
 Bagels, Muffins,
 Cookies, Coffee,
 Soft Drinks, OJ,
 Tea and more

Lunch at Carriage Crossing Restaurant & Underground Salt Museum

Wednesday Mar. 28, 11 a.m. Bus From Century II



A genuine Amish lunch complete with a delicious piece of homemade pie await those who catch the 11 a.m. tour bus leaving the east lobby of Century II for Yoder's Carriage Crossing Restaurant. Following lunch,

the bus makes the short trip north to the new, recently opened, Underground Salt Museum for a unique, tour of Kansas' seldom seen underground history of commercial salt production. The tour consists of a 20-minute trolley ride, visits to the exhibits and gift shop, all in the underground setting. It is a true "Kansas Original."

Cost: Purchase this tour on the registration form. The lunch, Underground Salt Museum Tour and comfortable bus transportation to and from Hutchinson is only **\$30**.

The bus will depart the museum at 3:30 p.m. and return to Century II by 4 p.m.



Where: East Century II lobby.
When: 11 a.m., Wed. Mar. 28.

Wednesday evening, March 28

5:00 Social in EXPO Hall

6:30 Banquet Hall opens

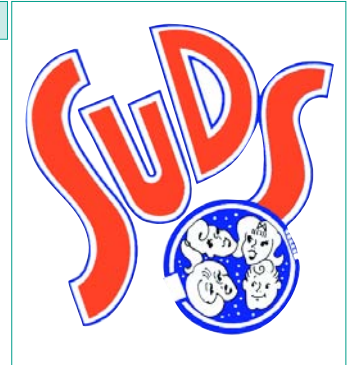
Awards Presentation, Entertainment

Operators, Managers, Administrators, Special Recognition, CCRs, Friend of Rural Water, Taste Contest, Silver Faucet Award by USDA Rural Development

E N T E R T A I N M E N T

SUDS, the Rockin' 60's Musical Soap Opera.

It's the swinging 60s, the Fab Four have just invaded America, it's Camelot in the White House and the hula hoop is all the rage. KRWA rolls back the clock for this year's conference entertainment – it's SUDS



– a bubbling, non-stop

rocking musical revue loosely attached to the story of a gal named Cindy who gets dumped on her 16th birthday, and goes down to the local Fluff and Fold Laundromat to commit suicide on the high speed cycle. You'll laugh 'til you cry as this story unfolds in song and character with such all-time favorites as *Respect*, *These Boots Are Made For Walking*, *Always Something There To Remind Me* and many more. It's one rockin' show – an incomparable Musical Soap Opera!

SUDS is the 40th Anniversary show in KRWA's long running tradition of presenting a great entertainment event following the evening's Awards Presentations. This special conference production is by Christi Moore and the gang from Cabaret Oldtown Theatre.

Smart Scents: How Aromatherapy Works for You

Thursday Mar. 29, 10 a.m. Room 201

Heard all the hype but still don't really know what it all means? In this hands-on seminar you will learn why aromatherapy works, how to select good quality essential oils, how to create your own personal blends, and how to incorporate aromatherapy into your everyday life.



Jill Miller

Jill D. Miller became interested in aromatherapy when she realized that she could make her own perfumes from essential oils that didn't give her a splitting headache. Her studies have taken her to the Aveda Aromaology Academy in Minneapolis, Minn. where Jill received a certification in aromaology; the study of combining wellness strategies with aromatherapy for better health. Jill has created aromas for individuals, businesses, and even a divorce coach to help with stress, transitions, and just for fun.

This is a must-see, extraordinary presentation.

Where: Room 201.

When: 10 a.m., Thursday, March 29. Don't miss!

G R A N D D O O R P R I Z E S



Again this year thanks to the fabulous design and quilting skills of Kathleen Ronnebaum, three more queen-size, all cotton quilts will go to lucky winners as grand door prizes. The 2007 quilt designs reflect a travel theme that includes: *A Trip Around the World*, in browns, blues and reds; *Tennessee Waltz*, (above) in jewel tones on cream, and *Wild Kansas Sunflowers*, in golds, blues and greens. One will be given at the Wednesday evening banquet and two will be drawn for at the Thursday luncheon. A meal ticket is a chance to win.

Hyatt Ballroom D

Moderator: Dale Shaffer
City of Benton
Op. Credit: W & WW

Proper Installation, Maintenance and Repair of Tracer Wire

Tracer wire is one option to help make buried pipelines locatable. But in many cases, the material used and installation methods are improper. Attend this session to learn about the proper type of wire and correct splicing and other methods to protect your tracer wire. Does your system have a "spec" for tracer wire installation? Attend this session and take one home.

Jim Grimes
MetroTech
Wathena, Kan.

Hyatt Ballroom E

Moderator: Kurt Ziegler
City of Girard
Op. Credit: W

Disinfection – Do It Right

Disinfection is the most important treatment process in water supply – and chlorination is the most widely used disinfection process. This session will cover chlorination chemistry, chlorination practices in Kansas, ammonia addition, operation problems, maintaining residuals in the distribution system, and troubleshooting chlorination problems. This session will also review CT compliance, chlorine dioxide and ozone as they relate to chlorination in the treatment processes.

Pat McCool
Kansas Rural Water Association
Wichita, Kan.

209 A

Moderator: John Reznicek
Marion RWD 4
Op. Credit: W

It's Water In the Bank

The Central Kansas Water Bank is administered by Big Bend Groundwater Management District No. 5. Currently a pilot program, water banking promotes water conservation and the wise use of the groundwater resources while providing increased flexibility for the water users within the banking area. Learn how this bank may be a benefit to the residents within GMD 5 and if the concept is right for other areas of Kansas.

Sharon Falk
Groundwater Management Dist. 5
Stafford, Kan.

209 B

Moderator: Gary Armentrout
Kansas Rural Water Association
Op. Credit: W

Modifying Water Storage Facilities

Keeping water as fresh as possible with adequate chlorine residuals throughout the entire distribution system is very important. One component that can be a contributing factor in the degradation of the chlorine residuals is the water storage facility. Learn how other systems have made modifications to their water towers to help keep water fresh.

Danny Coltrane
Shafer, Kline & Warren
Iola, Kan.

210 A

Moderator: Brenda Adkins
Jackson RWD 3
Op. Credit: W

The Key Is In the Record Keeping

This session describes the records needed to complete your annual Water Use Report, and how to make good use of the information from the report. Examples will show common situations encountered when completing the report. Alternate methods of submitting data, explanations of unusual data, and the KRWA "special focus" project also will be discussed.

Joan Kenny
Division of Water Resources
Topeka, Kan.

210 B

Moderator: Roger Engemann
Doniphan RWD 5
Op. Credit: W

The Financial Impact of Water Loss and Leak Detection

Many water system governing bodies and staff members seem to be unaware (and sometimes not concerned) of just how costly unaccounted-for water loss is to their systems. This session will discuss the water utility's real cost associated with unaccounted-for water loss and the financial justifications for implementation of leak detection programs.

Andy Crocker
Metrotech Corporation
Blacksburg, Va.

210 C

Moderator: Terry McDaniel
City of McFarland
Op. Credit: WW

Certified Wastewater Operator Forum

This is a "must-attend" session to attend if you are planning to take the KDHE certification examination at the conclusion of the conference. This session is a review only and not meant to be a comprehensive preparation course. Topics to be covered include operator expectations, examination concepts, basic math problems and wastewater review. Study tips and exam taking strategies will be addressed.

Vickie Wessel
Marsha Carpenter
KS Dept. of Health & Environment
Topeka and Salina, Kan.

203

Moderator: Kathy Reusch
Jefferson RWD 13
Op. Credit: None

Developing Employee Handbooks: A Common Sense Approach

An employee handbook that clearly explains workplace policies can benefit any organization. It ensures that every employee receives the same information about the rules of the workplace, what management or the board/ council expects from them, and what employees can expect in return. An effective handbook can also protect the organization against potential lawsuits. What topics go in an employee handbook and where to obtain more information to help in developing an employee handbook?

Linda Knupp
Manhattan Public Library
Manhattan, Kan.

Hyatt Ballroom D

Moderator: Mike Mayberry
City of Kiowa, KRWA
Op. Credit: W

Selection and Maintenance of Chemical Feed Pumps

Of all the equipment water systems work with, the metering pump will generally require the most attention. This is because more than the pump is involved. You are also dealing with water chemistry, pressure, temperature, etc. This session will address the sizing and type of pump for each chemical the system feeds. What's your maintenance program for the pumps? Pick up tips on maximizing the performance of your mechanical chemical feed pump to ensure their accuracy.

Ryan Jakic
USABlueBook
Gurnee, Ill.

Hyatt Ballroom E

Moderator: John Provorse
Butler RWD 4
Op. Credit: None

Planning for Capital Improvements

In this day of constricting budgets and rising demand for services, it is vitally important that cities and RWDs establish priorities. In the past, many local units of governments responded to the competing demand for services under the "squeaking wheel gets the grease" method. Attend this session to learn how to develop a plan to prioritize projects without jeopardizing your financial integrity.

John Haas
Ranson Financial Consultants, LLC
Wichita, Kan.

209 A

Moderator: Jon Steele
Kansas Rural Water Association
Op. Credit: W & WW

Lightning – It Can Burn You, Your Equipment or Budget

Thousands of homes and other properties including water and wastewater treatment plants, controls systems, etc., are damaged or destroyed annually by lightning. Lightning damage averages more than a quarter billion dollars in property damage every year in the U.S. Attend this session to learn how to economically afford to protect equipment – and yourself from lightning strikes.

Robert Blume
IET Consulting
Milford, Kan.

209 B

Moderator: Gary Weiland
City of Ness City
Op. Credit: None

Impact of Wage Rates on Grant Financing

Water or sewer systems wishing to utilize Community Development Block Grants to fund the construction or improvement of infrastructure must comply with Davis-Bacon wage requirements and other labor standards regulations. Learn how these regulations impact projects. Davis-Bacon wage requirements could have an impact on construction costs. Advance knowledge of wage rates will give systems a better understanding of financing requirements prior to grant and/or loan applications.

Salih Doughramaji
Kansas Dept. of Commerce
Topeka, Kan.

210 A

Moderator: Roger Koch
City of Axtell
Op. Credit: W

Bacteriological Sampling and Chlorine Residual Testing

This session will cover bacteriological sampling procedures and chlorine residual testing. Bacteriological sampling plans, actual sampling, and interpretation of sampling results will be covered. This session is most important for those new to the field and those wanting to learn more about these important responsibilities of operation.

Greg Taylor
KS Dept. of Health & Environment
Chanute, Kan.

210 B

Moderator: Bill Kern
Franklin RWD 6
Op. Credit: WW & W

Digging in Kansas – Make the Call!

This session provides an opportunity to learn more about Kansas One Call and the procedures to keep in mind before starting any excavation project. This session will cover who's responsible to make the call when a contractor is hired. Information will be provided on the I-Tic, Internet ticket software for filing locate requests. Questions are encouraged.

Max Pendergrass
Kansas One Call
Wichita, Kan.

210 C

Moderator: Paul Strathman
Nemaha RWD 3
Op. Credit: W

Certified Water Operator Forum

Attendance at this session is recommended if you are preparing to take the KDHE certification examination at the conclusion of the conference. This session is a review only and not meant to be a comprehensive preparation course. Topics to be covered include operator expectations, examination concepts, basic math problems and water review. Study tips and exam taking strategies will be presented.

Vickie Wessel
Marsha Carpenter
KS Dept. of Health & Environment
Topeka and Salina, Kan.

203

Moderator: Anita Goertzen
City of Goessel
Op. Credit: None

Newsletter, Brochure or Press Release – What'll It Be?

A newsletter can become a great benefit by communicating the organization's positive image to a wide range of constituents. Providing regular, timely and targeted information on an organization's activities, events and people does not need to be expensive. This session will cover effective ways to produce a newsletter but will also review when to communicate to other targeted markets with a brochure or press release.

Dan Knupp
Kansas Rural Water Association
Wamego, Kan.

A.Y. MacDonald Manufacturing
Broken Arrow, Oklahoma

Ace Pipe Cleaning
Kansas City, Missouri

Advance Chemical Solutions
Tulsa, Oklahoma

Alexander Pump & Services
St. Marys, Kansas

Allgeier, Martin & Associates
Joplin, Missouri

Alliance Pump & Mechanical Service
Independence, Missouri

Alliance Water Resources
Columbia, Missouri

American AVK Company
Hugoton, Kansas

Anderson Peck Agency
Topeka, Kansas

Archer Engineers
Lee's Summit, Missouri

Arkholia Sand & Gravel
Fort Smith, Arkansas

ASC Pumping Equipment
Lenexa, Kansas

B G Consultants
Manhattan, Kansas

Baburek Metal Preserving Company
Plattsmouth, Nebraska

Badger Meter
Milwaukee, Wisconsin

Bartlett & West Engineers
Topeka, Kansas

Bestore
Lenexa, Kansas

Bohlmann, Inc.
Dension, Iowa

BRB Contractors
Topeka, Kansas

Brenntag Southwest
Nowata, Oklahoma

Bucher, Willis & Ratliff
Salina, Kansas

Bumgardner Sales & Service
Independence, Missouri

Burns & McDonnell Engineering
Wichita, Kansas

Carbon Central
Excelsior Springs, Missouri

Central Tank Coatings
Elgin, Iowa

CES Industrial Piping Supply
Lees Summit, Missouri

Chlorinators Incorporated
Stuart, Florida

City of Lyons
Lyons, Kansas

Clarke Well & Equipment
Great Bend, Kansas

Clear Water Equipment
Overland Park, Kansas

Clearwater Associates
Kansas City, Missouri

Comm-Tronix
Wichita, Kansas

Commerce Bank
Manhattan, Kansas

Cook, Flatt & Stobel Engineers
Topeka, Kansas

CUES
Orlando, Florida

Cunningham Sandblasting & Painting
Joplin, Missouri

Custom Aeration Technologies
Weston, Colorado

D C & B Supply Company
Pratt, Kansas

Data Access & Storage Center
Lawrence, Kansas

Ditch Witch of Kansas
Valley Center, Kansas

Division of Water Resources
Topeka, Kansas

Doerr Metal Products
Larned, Kansas

Douglas Pump Service
Overland Park, Kansas

DPC Enterprise
Wichita, Kansas

Dworkin Company
Kansas City, Missouri

Dynotek
Lakewood, Colorado

EAI Central
Olathe, Kansas

Earles Engineering & Inspection
Liberal, Kansas

Earth Science Laboratories
Rogers, Arkansas

East Jordan Ironworks
Ardmore, Oklahoma

EBH Engineers
Great Bend, Kansas

Edwards Chemicals
St. Joseph, Missouri

EFI-Wright Sales
Riverside, Missouri

Enviro-Line Company
Osawatomie, Kansas

Environmental & Process Systems
Lenexa, Kansas

Environmental Protection Agency
Kansas City, Kansas

Farwest Corrosion Control Products Company
Tulsa, Oklahoma

Fellows Marketing
Olathe, Kansas

Filtration Specialties
Claremore, Oklahoma

Flame Engineering
La Crosse, Kansas

Fluid Equipment Company
Lee's Summit, Missouri

Foley Equipment Company
Wichita, Kansas

Ford Meter Box
Rocky Mount, Missouri

Gathright Marketing Company
Shawnee Mission, Kansas

GeoAnalytica, Inc.
Oakley, Utah

George Butler Associates
Lenexa, Kansas

GIS Workshop
Lincoln, Nebraska

Ground Water Associates
Wichita, Kansas

Hach Company
Claremore, Oklahoma

Hajoca Corporation
Wichita, Kansas

Harben, Inc.
Loveland, Ohio

Haynes Equipment Company
Olathe, Kansas

HD Supply Waterworks
Grandview, Missouri

HD Supply Waterworks
Blue Springs, Missouri

Heartland Controls
Stanley, Kansas

Hersey Meter Company
Olathe, Kansas

IAPMO
Wichita, Kansas

Industrial Sales Company
Olathe, Kansas

InfiniTec
Hays, Kansas

Inman Irrigation
Inman, Kansas

Insituform Technologies
Kansas City, Missouri

ISCO Industries
Pryor, Oklahoma

Itron
Spokane, Washington

Jayhawk Software
Iola, Kansas

JCI Industries
Lees Summit, Missouri

JCM Industries
Nash, Texas

Johnson Service Company
Kearney, Nebraska

Kaeser Compressors
Overland Park, Kansas

Kansas Biological Survey
Lawrence, Kansas

Kansas Correctional Industries
Lansing, Kansas

Kansas Department of Commerce
Topeka, Kansas

Kansas Dept. Health & Environment
Topeka, Kansas

Kansas Geological Survey
Lawrence, Kansas

Kansas One Call System
Wichita, Kansas

Kansas Rural Water Association
Seneca, Kansas

Kansas Water Office
Topeka, Kansas

Key Equipment
Kansas City, Kansas

Larkin Group
Kansas City, Missouri

Layne Western
Wichita, Kansas

Lee Mathews Equipment
Kansas City, Missouri

Leggette, Brashears & Graham
Independence, Missouri

Letts Van Kirk & Associates
Kansas City, Kansas

Liquid Waste Management
Longmont, Colorado

Maguire Iron
Sioux Falls, South Dakota

Master Meter Company
Fort Worth, Texas

Mayer Specialty Services
Goddard, Kansas

Mellen & Associates
Council Bluffs, Iowa

Metrotech Corporation
Santa Clara, California

Micro Comm
Olathe, Kansas

Midland Manufacturing
Fort Worth, Texas

Midwest Custom Materials
Quincy, Illinois

Miller & Associates, Consulting Engineers
Kearney, Nebraska

MKEC Engineering Consultants
Wichita, Kansas

MMG Water & Wastewater Products
Riverside, Missouri

Mueller Company
Decatur, Illinois

Municipal Pipe Services
Hastings, Nebraska

Natgun Corporation
Overland Park, Kansas

Neptune Technology Group
Olathe, Kansas

Nowak Construction Company
Goddard, Kansas

Nutri-Ject Systems
Hudson, Iowa

Olathe Winwater Works Company
Olathe, Kansas

Paving Maintenance Supply
Wichita, Kansas

Payment Solutions
Emporia, KS

PipeLife - Jet Stream
Siloam Springs, Arkansas

Poe & Associates
Wichita, Kansas

Ponzer - Youngquist
Olathe, Kansas

Power Specialties
Wichita, Kansas

Price Bros. Equipment Company
Wichita, Kansas

Professional Engineering Consultants
Wichita, Kansas

Pump & Power Equipment
Lenexa, Kansas

PW Eagle
Kansas City, Missouri

R. E. Pedrotti Company
Mission, Kansas

EXHIBITORS & SPONSORS

R. H. Tauser & Associates
Chesterfield, Missouri

Rainmaker Sales
Shawnee, Oklahoma

Ranson Financial Consultants / KRWFA
Wichita, Kansas

Ray Lindsey Company
Olathe, Kansas

RE-Ox LLC
De Soto, Kansas

Salina Supply Company
Salina, Kansas

Sargent Drilling
Broken Bow, Nebraska

Schwab-Eaton, PA
Manhattan, Kansas

SE KS Regional Planning Commission
Chanute, Kansas

Sellers Equipment
Wichita, Kansas

Servi-Tech Laboratories
Dodge City, Kansas

Shafer, Kline & Warren
Kansas City, Missouri

Sherwin-Williams Company
Prairie Village, Kansas

Smith & Loveless
Lenexa, Kansas

Smith-Blair
Raymore, Missouri

SOLARBEE, Inc.
Westminster, Colorado

Steffen Midwest
Sioux City, Iowa

T Christy Enterprises
Anaheim, California

T T Technologies
Aurora, Illinois

Team Laboratory Chemical Corporation
Detroit Lakes, Minnesota

Thoroughbred Computer Systems
Topeka, Kansas

Tnemec Company/Midwest Coating Consultants
North Kansas City, Missouri

EXHIBITORS & SPONSORS

Tonka Equipment Company
Plymouth, Minnesota

Truck Parts & Equipment
Wichita, Kansas

United Rentals Trench Safety
Kansas City, Missouri

US Pipe, Valve & Hydrants
Tulsa, Oklahoma

USABlueBook
Gurnee, Illinois

USDA Rural Development
Topeka, Kansas

Utility Maintenance Contractors
Wichita, Kansas

Utility Service Co. Inc.
Perry, Georgia

Utility Solutions Associates
Lenexa, Kansas

Vegetation Management Supply
Wichita, Kansas

Vermeer Great Plains Inc.
Goddard, Kansas

VMAC - Vehicle Mounted Air Compressor
Nanaimo, British Columbia

Water Products
McPherson, Kansas

Watertower Maintenance / Water Tank Inspection
Joplin, Missouri

WaterWise Enterprises
Wichita, Kansas

Wichita Winwater Works Company
Wichita, Kansas

Wilson & Company Engineers & Architects
Salina, Kansas

Thank You . . .

To all exhibitors and sponsors who help make the KRWA conference & exhibition among the best. Have a great show!

A final EXPO Hall Floor Plan with booth designations will be included in each registration packet picked up at the conference. Also listings of exhibitors and the floor plan will be posted throughout EXPO Hall.

**Water or Wastewater Operator Certification Exam
Small System, Class I, II, III and IV
Thursday, March 29, 1:30 P.M.
Room 210 C, Century II Convention Center**

The Kansas Department of Health and Environment requires that the exam application be received by KDHE at least two (2) weeks before the exam date. For an exam application, please call KDHE at 785/296-5511 or print an application from KDHE's Web site www.kdhe.state.ks.us/water/www.html. Check under related links. The application can be faxed to KDHE at 785/296-5509, following up with the original application and the exam fee in the mail.

CELL PHONE ETIQUETTE

Cell phones are great assets – however, KRWA requests that when attending any sessions, noon luncheon or event during the conference, please set your phone so it does not ring. It's a matter of courtesy to the presenter. Also, no one else cares to be distracted because of a ringing cell phone. Please take your call in the lobby or outside the classroom.

Annual Membership Meeting

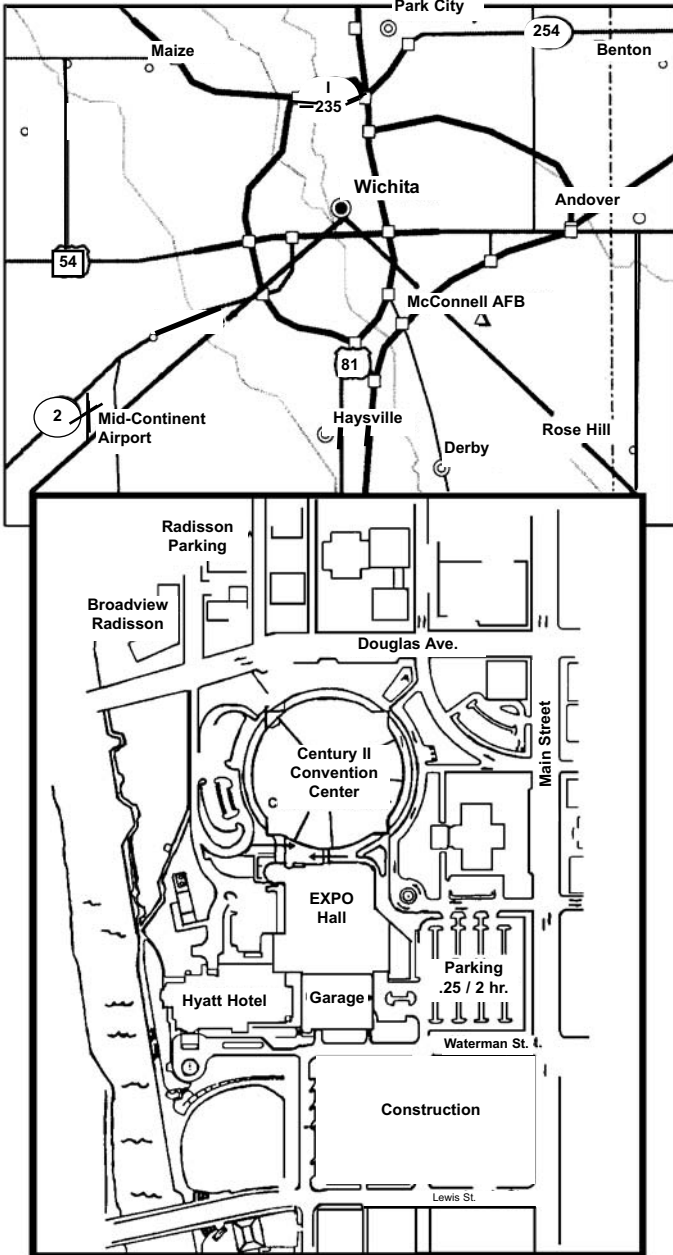
Please note that KRWA's annual membership and business meeting will be held in Meeting Room 209A beginning at 8:00 a.m., Thursday, March 29. Delegate forms were mailed to all voting members on January 4. Check with your city or RWD's office to ensure that your voting delegate is registered.

- Dennis Schwartz**, President, Shawnee Co. RWD 8, Tecumseh, Kansas
- Patricia Shaffer**, Vice-President, Butler Co. RWD 5, Benton, Kansas
- Sharon Dwyer**, Treasurer, Douglas Co. RWD 5, Lawrence, Kansas
- Mike Mayberry**, Secretary, City of Kiowa, Kiowa, Kansas
- Sam Atherton**, Director, PWWSD 4, Cherryvale, Kansas
- Larry Remmenga**, Director, City of Concordia, Concordia, Kansas
- Darrell Schlabach**, Director, Washington Co. RWD 1, Hanover, Kansas

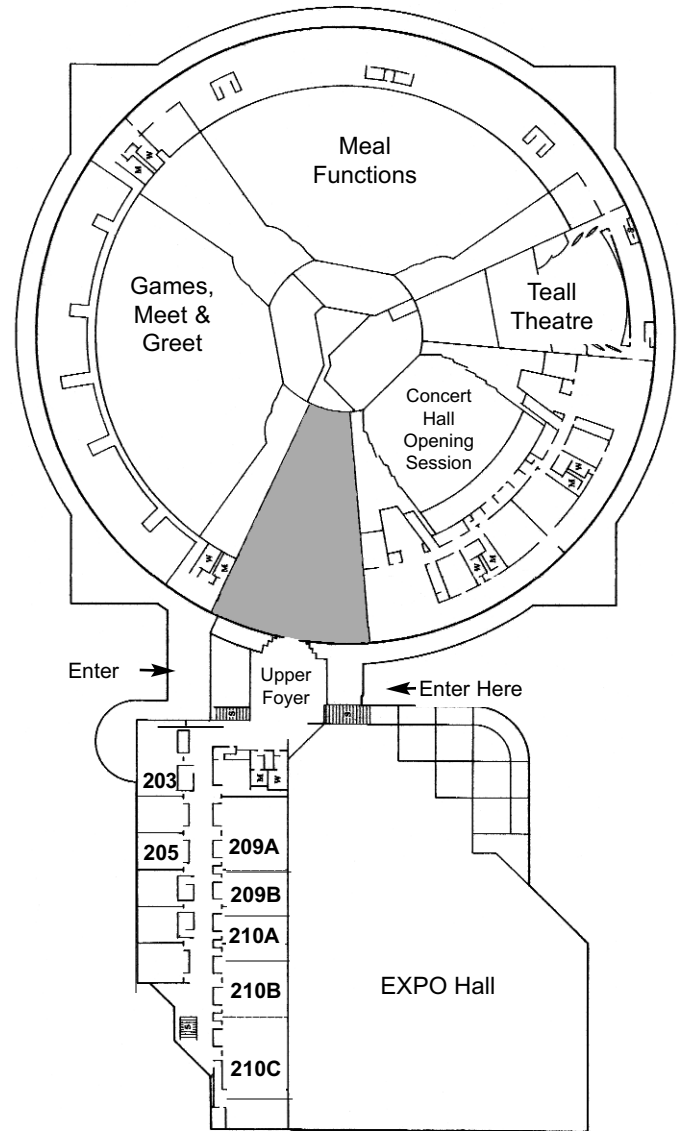
KRWA STAFF

- Elmer Ronnebaum**, General Manager
- Laurie Strathman**, Administrative Assistant
- Gary Armentrout**, Technical Assistant
- Lonnie Boller**, Surface Water Tech
- Greg Duryea**, Technical Assistant
- Mike Fisher**, KAN STEP Tech
- Doug Guenther**, Technical Assistant
- Doug Helmke**, Water Rights/Source Water Tech
- Shane Holthaus**, KAN STEP Tech
- Jim Jackson**, Source Water Tech
- Bob Kirby**, Technical Assistant
- Jesse Knight**, GIS/GPS Mapping Tech
- Dan Knupp**, Communications Coordinator
- Pete Koenig**, KAN STEP, GIS Mapping Tech
- Pat McCool**, Consultant
- Charlie Schwindamann**, Wastewater Tech
- Jon Steele**, Technical Assistant
- Mark Thomas**, GIS/GPS Mapping Tech
- Delbert "Bert" Zerr**, Consultant

MAP OF WICHITA



CENTURY II CONVENTION CENTER



Century II Meeting Rooms are on the promenade level. Hyatt Ballrooms D and E and Trail Rooms are on the lower level, opposite EXPO Hall.

ACCOMMODATIONS

Rooms have been blocked at the following hotels for the 2007 conference. Make sure you request the KRWA block. Rooms fill fast.

Best Western Airport Inn, 6815 W. Kellogg; Ph. 888/942-5666. Free breakfast; comp. shuttle to Century II. \$69 flat

Best Western Governors Inn & Suites, 4742 S. Emporia, Ph. 866/522-0775 or 316/522-0775; comp. deluxe continental breakfast; king \$59, double \$69

Broadview Hotel, 400 W. Douglas (across street from Century II), complimentary parking garage; Ph. 316/262-5000; \$90 (one to two persons). Deluxe king, \$119

Cambridge Suites, 120 W. Orme, downtown Wichita; Ph. 316/263-1061, \$99 Executive Suite; \$109 Studio Double; \$129 Penthouse Suite

Clubhouse Inn & Suites, 515 S. Webb Road; Ph. 316/684-1111; comp. full hot breakfast buffet, \$69 flat

CrestHill Suites Hotel Company, 12111 E. Central Avenue; Ph. 888/723-1655 or 316/689-8000; comp. deluxe continental breakfast; studio or one bedroom w/king bed \$70

Days Inn West, 550 South Florence; Ph. 316/942-1717; comp. breakfast; \$69 flat

Four Points by Sheraton, 5805 W. Kellogg Avenue; comp. full hot breakfast; Ph. 316/942-7911; \$69 flat, comp. shuttle to Century II

Hampton Inn, 3800 W. Kellogg; Ph. 316/945-4100; comp. airport shuttle and deluxe hot breakfast bar; \$109 flat

Holiday Inn, 221 E. Kellogg; (formerly LaQuinta Inn), within walking distance to Century II, comp. shuttle to Century II and airport; Ph. 316/269-2090; \$82 flat

Holiday Inn Select, 549 S. Rock Road; Ph. 888/558-5113 or 316/681-5083, for king or double, (one to four persons); \$79 flat

Hotel at Old Town, 830 E. First, complimentary parking garage; Ph. 316/267-4800; \$99 Queen; \$109 King

Hyatt Regency, attached to Century II, complimentary parking garage; Ph. 316/293-1234; \$112 single; \$122 double; **SOLD OUT as of 6/12/06**

TownePlace Suites by Marriott, 9444 E. 29th St. N.; Ph 316/631-3773 Ext. 520; comp. cont. breakfast; full kitchen; \$89 flat

Wichita Fairfield Inn, by Marriott; 333 S. Webb Road; Ph. 316/685-3777; comp. continental breakfast; \$79 flat, complete renovation in 2005

Wichita Airport Hotel, 5500 W. Kellogg Drive; Ph. Hotel Direct Reservations: 316/943-2181, \$70 flat rate (kings and doubles: one to four persons)

REGISTRATION FORM

40th Annual Water & Wastewater Conference & Exhibition

Tuesday, Wednesday, Thursday, March 27- 29, 2007

Century II Convention Center, Wichita, Kan.

Register **ONLY ONE PERSON** on this form.

Please print or type: [Check here if you want Operator Credit:](#)

Name: _____

Represents: _____

Title: _____

Address: _____

City, State: _____

Zip: _____ Phone: _____ / _____ - _____

Indicate which days you plan to attend:

Tuesday, 3/27 Wednesday, 3/28 Thursday, 3/29

Registration Fee prior to March 15 \$80 \$ _____

Registration Fee after March 15 \$100 \$ _____

Registration Fee includes the following complimentary functions. Please indicate those you plan to attend.

"Grand 40 Hoopla," Tuesday, 6:30 p.m. Yes No
Breakfast, Thursday, 7:00-8:30 a.m. Yes No

Note: Registration fee does not include golf, meal tickets or Special Spouse Wed. Program.

Golf Tourney, 3/27, 8:30 a.m. (pay KRWA) . \$65 \$ _____

Tuesday, buffet lunch, Century II \$10 \$ _____

Wednesday, 3/28 Luncheon Ticket \$10 \$ _____

Wednesday, 3/28 Special Spouse Program (Bus and luncheon Hutchinson) . . \$30 \$ _____

Wednesday Awards Banquet & Show \$25 \$ _____

Thursday, 3/29 Luncheon Ticket \$10 \$ _____

Total Due: \$ _____

Payment Enclosed \$ _____

Bill Me: Pay by Credit Card:

KRWA requests preregistration for attendance at the preconference sessions on Tuesday.

If you are attending on Tuesday, please complete the session list on reverse side of this form. ➡

In order to have adequate handouts and to make other session arrangements for the Tuesday Preconference Sessions. KRWA requests that those planning to attend preconference sessions indicate below which session they plan to attend.

- Ground Water: Finding, Maintaining, Protecting and Rehabilitating It
- Wastewater Collection System Evaluation and Rehabilitation
- Building Blocks For Creating Or Improving A Web Site
- Development Of GIS For Improved Digital Management Services
- HR Fundamentals; Powerful Presentations
- Workplace Safety: National Incident Management Training
- KanCap: Improving Management Of Kansas Water Systems
- Alternative Dispute Resolution

After completing this form on both sides, send it with payment to:

KRWA
PO Box 226
Seneca, KS 66538

If you wish to register online, go to www.krwa.net, "training," and "conference."

If you have a question about registration, send an e-mail to the team at krwa@krwa.net. If you prefer, call KRWA at 785.336.3760.

REGISTRATION FORM

40th Annual Water & Wastewater Conference & Exhibition

Tuesday, Wednesday, Thursday, March 27- 29, 2007

Century II Convention Center, Wichita, Kan.

Register **ONLY ONE PERSON** on this form.

Please print or type: [Check here if you want Operator Credit:](#)

Name: _____

Represents: _____

Title: _____

Address: _____

City, State: _____

Zip: _____ Phone: _____ / _____ - _____

Indicate which days you plan to attend:

Tuesday, 3/27 Wednesday, 3/28 Thursday, 3/29

Registration Fee prior to March 15 \$80 \$ _____

Registration Fee after March 15 \$100 \$ _____

Registration Fee includes the following complimentary functions. Please indicate those you plan to attend.

"Grand 40 Hoopla," Tuesday, 6:30 p.m. Yes No
 Breakfast, Thursday, 7:00-8:30 a.m. Yes No

Note: Registration fee does not include golf, meal tickets or Special Spouse Wed. Program.

Golf Tourney, 3/27, 8:30 a.m. (pay KRWA) . \$65 \$ _____

Tuesday, buffet lunch, Century II \$10 \$ _____

Wednesday, 3/28 Luncheon Ticket \$10 \$ _____

Wednesday, 3/28 Special Spouse Program (Bus and luncheon Hutchinson). . . \$30 \$ _____

Wednesday Awards Banquet & Show \$25 \$ _____

Thursday, 3/29 Luncheon Ticket \$10 \$ _____

Total Due: \$ _____

Payment Enclosed \$ _____

Bill Me: Pay by Credit Card:

KRWA requests preregistration for attendance at the preconference sessions on Tuesday.

If you are attending on Tuesday, please complete the session list on reverse side of this form. ➡

In order to have adequate handouts and to make other session arrangements for the Tuesday Preconference Sessions. KRWA requests that those planning to attend preconference sessions indicate below which session they plan to attend.

- Ground Water: Finding, Maintaining, Protecting and Rehabilitating It
- Wastewater Collection System Evaluation and Rehabilitation
- Building Blocks For Creating Or Improving A Web Site
- Development Of GIS For Improved Digital Management Services
- HR Fundamentals; Powerful Presentations
- Workplace Safety: National Incident Management Training
- KanCap: Improving Management Of Kansas Water Systems
- Alternative Dispute Resolution

After completing this form on both sides, send it with payment to:

KRWA
PO Box 226
Seneca, KS 66538

If you wish to register online, go to www.krwa.net, "training," and "conference."

If you have a question about registration, send an e-mail to the team at krwa@krwa.net. If you prefer, call KRWA at 785.336.3760.

REGISTRATION FORM

40th Annual Water & Wastewater Conference & Exhibition

Tuesday, Wednesday, Thursday, March 27- 29, 2007

Century II Convention Center, Wichita, Kan.

Register **ONLY ONE PERSON** on this form.

Please print or type: [Check here if you want Operator Credit:](#)

Name: _____

Represents: _____

Title: _____

Address: _____

City, State: _____

Zip: _____ Phone: _____ / _____ - _____

Indicate which days you plan to attend:

Tuesday, 3/27 Wednesday, 3/28 Thursday, 3/29

Registration Fee prior to March 15 \$80 \$ _____

Registration Fee after March 15 \$100 \$ _____

Registration Fee includes the following complimentary functions. Please indicate those you plan to attend.

"Grand 40 Hoopla," Tuesday, 6:30 p.m. Yes No
 Breakfast, Thursday, 7:00-8:30 a.m. Yes No

Note: Registration fee does not include golf, meal tickets or Special Spouse Wed. Program.

Golf Tourney, 3/27, 8:30 a.m. (pay KRWA) . \$65 \$ _____

Tuesday, buffet lunch, Century II \$10 \$ _____

Wednesday, 3/28 Luncheon Ticket \$10 \$ _____

Wednesday, 3/28 Special Spouse Program (Bus and luncheon Hutchinson). . . \$30 \$ _____

Wednesday Awards Banquet & Show \$25 \$ _____

Thursday, 3/29 Luncheon Ticket \$10 \$ _____

Total Due: \$ _____

Payment Enclosed \$ _____

Bill Me: Pay by Credit Card:

KRWA requests preregistration for attendance at the preconference sessions on Tuesday.

If you are attending on Tuesday, please complete the session list on reverse side of this form. ➡

In order to have adequate handouts and to make other session arrangements for the Tuesday Preconference Sessions. KRWA requests that those planning to attend preconference sessions indicate below which session they plan to attend.

- Ground Water: Finding, Maintaining, Protecting and Rehabilitating It
- Wastewater Collection System Evaluation and Rehabilitation
- Building Blocks For Creating Or Improving A Web Site
- Development Of GIS For Improved Digital Management Services
- HR Fundamentals; Powerful Presentations
- Workplace Safety: National Incident Management Training
- KanCap: Improving Management Of Kansas Water Systems
- Alternative Dispute Resolution

After completing this form on both sides, send it with payment to:

KRWA
PO Box 226
Seneca, KS 66538

If you wish to register online, go to www.krwa.net, "training," and "conference."

If you have a question about registration, send **an e-mail** to the team at krwa@krwa.net. If you prefer, call KRWA at 785.336.3760.