

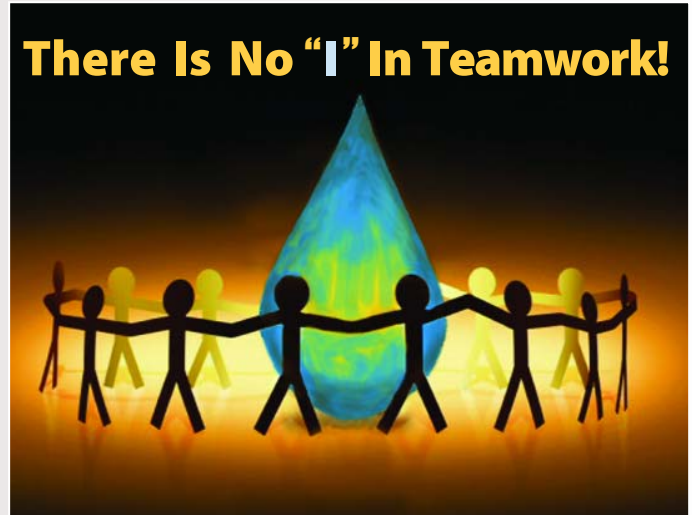
# 41st Annual Conference & Exhibition

March 25-27, 2008, Century II Convention Center – Wichita

The 2008 Annual Conference will be the largest water and wastewater conference in Mid-America, including 275 exhibit spaces filled in EXPO Hall.

Being part of a team means having a diversity of skills and talents. KRWA's conference brings professionals from across America to help water and wastewater systems with problems large and small. Teamwork! Partnerships! Alliances! Agreements! That means doing the right thing – and everyone wins! The winning agenda for 2008 includes these great features:

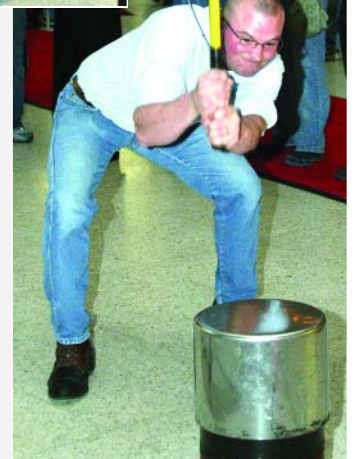
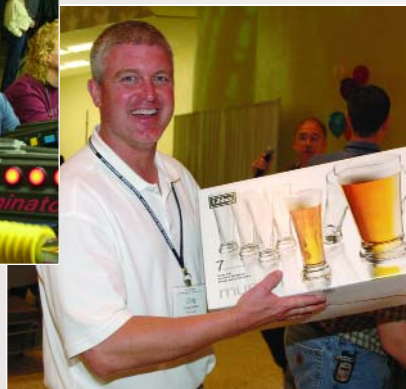
- 56 concurrent training sessions for boards/councils, staff and professionals
- 275 exhibits in EXPO Hall
- Special guest speakers
- Annual Attorney's Forum
- Welcome BBQ and Social, new games and more fun
- Awards Banquet and entertainment
- Spouse Programs
- Water Pac Raffle
- Annual Meeting of Membership
- Certification exams
- Great door prizes



## Pre-Conference Sessions, Tuesday March 25

The KRWA Annual Conference is the largest water and wastewater conference in the Midwest. Three days are packed with outstanding national, regional, state and local presenters. The Pre-Conference sessions begin Tuesday morning March 25 and include these offerings:

- Water Utility Operations
- GIS/GPS: Benefits, Applications
- Activated Sludge
- KanCap Board/Council Training
- Web Site Development
- NIMS, Emergency Preparedness and Tabletop Exercise
- Alternative Dispute Resolution
- User Charge Analysis – Water and Sewer Rate Review



# Conference Keynote, Shirley Garrett

## "A Tap Water Girl in a Bottled Water World"



**K**RWA's 2008 Conference provides another outstanding keynote address. Dr. Shirley Garrett is a full time professional speaker and author who helps audiences create compelling connections with themselves, and most importantly, the people in their lives and the

profession they serve. While the 2008 keynote "A Tap Water Girl In A Bottled Water World" includes many zany antics of a coming-of-age girl, maturing woman and the escapades of parents, cousins and friends, the message is really about all of us – and our own quests in trying to make life make sense. Shirley is a popular keynoter, workshop leader, and retreat facilitator who has the gift of normalizing life/work stressors to create a sense of connection among the audience . . . a realization that "we're all in this together."

Known affectionately as Dr. Shirl, Shirley's southern humor and common sense approach, coupled with heartfelt wisdom will entertain and challenge you.

Shirley is a graduate of Samford University, the State University of West Georgia, and the

University of Georgia. She is the former Director of Tanner Women's Center, has served on the Board of Directors for the National Association of Women's Health Professionals, and was named the 1992 Georgia Woman of Achievement. She is the CEO of Fostering The Dream, a non-profit organization committed to providing housing assistance to

families who foster children. Shirley's 14 years as a physical education teacher helps her set the pace for today's active audiences.

Don't miss the Opening Session including Shirley's keynote, "A Tap Water Girl In A Bottled Water World", Wednesday, March 26 at 8:30 a.m. in Concert Hall at Century II.

## Conference Accommodations

Rooms have been blocked at the following hotels for the 2008 conference. Make sure you request the KRWA block. Rooms fill fast.

**Best Western Airport Inn**, 6815 W. Kellogg; Ph. 888/942-5666. Free breakfast; comp shuttle to Century II. \$72 flat

**Best Western Governors Inn & Suites**, 4742 S. Emporia, Ph. 866/522-0775 or 316/522-0775; comp. deluxe continental breakfast; king \$59, double \$69

**Broadview Hotel**, 400 W. Douglas (across street from Century II), comp. parking garage; Ph. 316/262-5000; \$90 queen; deluxe king, \$102

**Cambridge Suites**, 711 South Main, downtown Wichita; Ph. 316/263-1061, \$99 Executive Suite; \$109 Studio Double; \$129 Penthouse Suite

**Clubhouse Inn & Suites**, 515 S. Webb Road; Ph. 316/684-1111; comp. full hot breakfast buffet, \$59 flat

**CrestHill Suites Hotel Company**, 12111 E. Central Avenue; Ph. 888/723-1655 or 316/689-8000; comp. deluxe continental breakfast; studio or one bedroom w/king bed \$75; two bedroom suite, \$149

**Days Inn West**, 550 South Florence; Ph. 316/942-1717; comp. breakfast; \$65 flat

**Hampton Inn**, 3800 W. Kellogg; Ph. 316/945-4100; comp. airport shuttle and deluxe hot breakfast bar; \$129 flat

**Holiday Inn**, 221 E. Kellogg; within walking distance to Century II, comp. shuttle to Century II and airport; Ph. 316/269-2090; \$82 flat

**Holiday Inn Select**, 549 S. Rock Road; Ph. 888/558-5113 or 316/681-5083, for king or double, (one to four persons); \$82 flat

**Hotel at Old Town**, 830 E. First, complimentary parking garage; comp. hot buffet breakfast; Ph. 316/267-4800; \$109 Queen; \$119 King

**Hyatt Regency**, attached to Century II, complimentary parking garage; Ph. 316/293-1234; \$113 single; \$113 double **SOLD OUT AS OF JUNE 15**

**TownePlace Suites**, by Marriott, 9444 E. 29th St. N.; Ph 316/631-3773 Ext. 520; comp. continental breakfast; full kitchen; \$89 flat

**Wichita Fairfield Inn**, by Marriott; 333 S. Webb Road; Ph. 316/685-3777; comp. continental breakfast; \$79 flat, complete renovation in 2005

